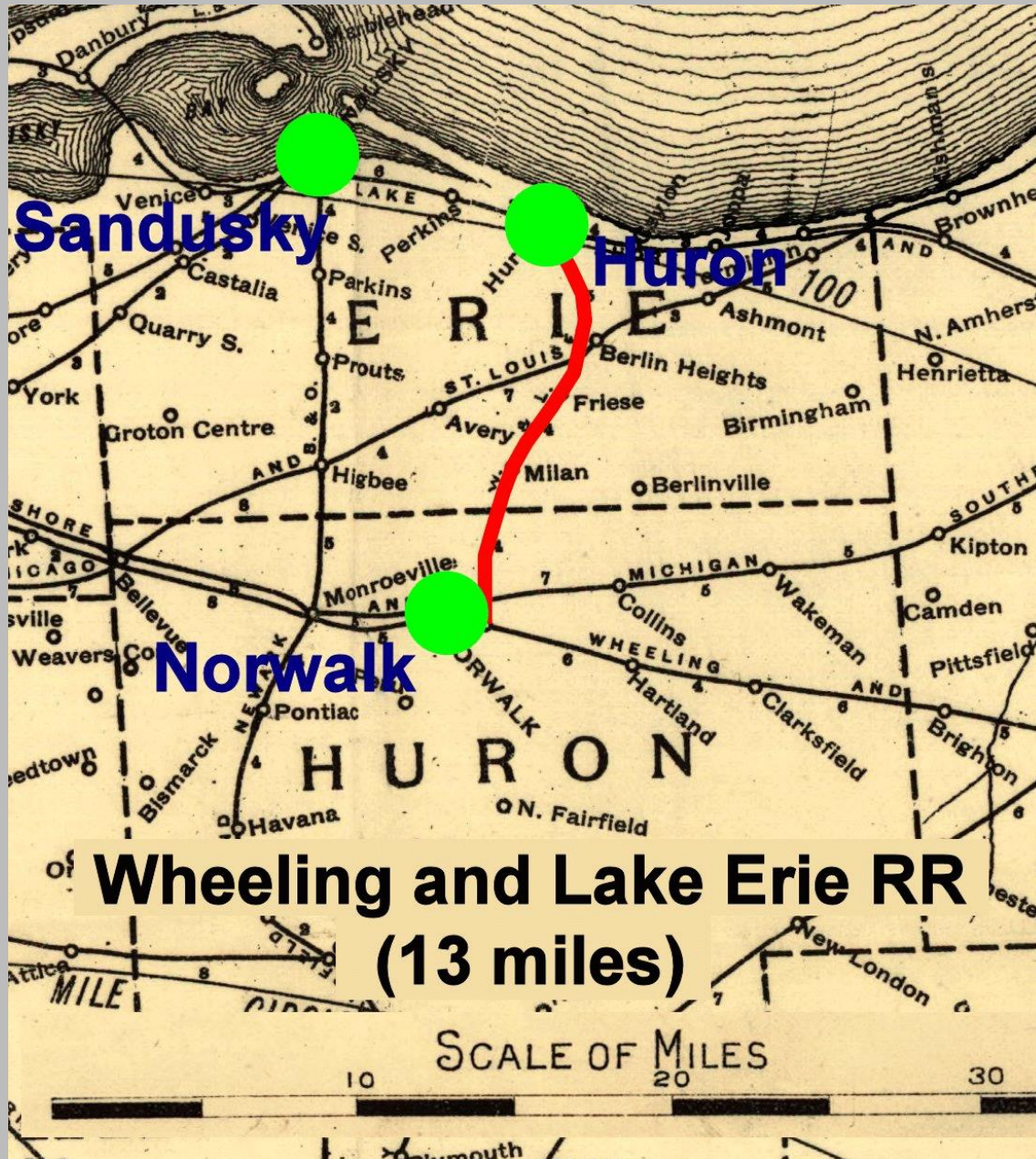


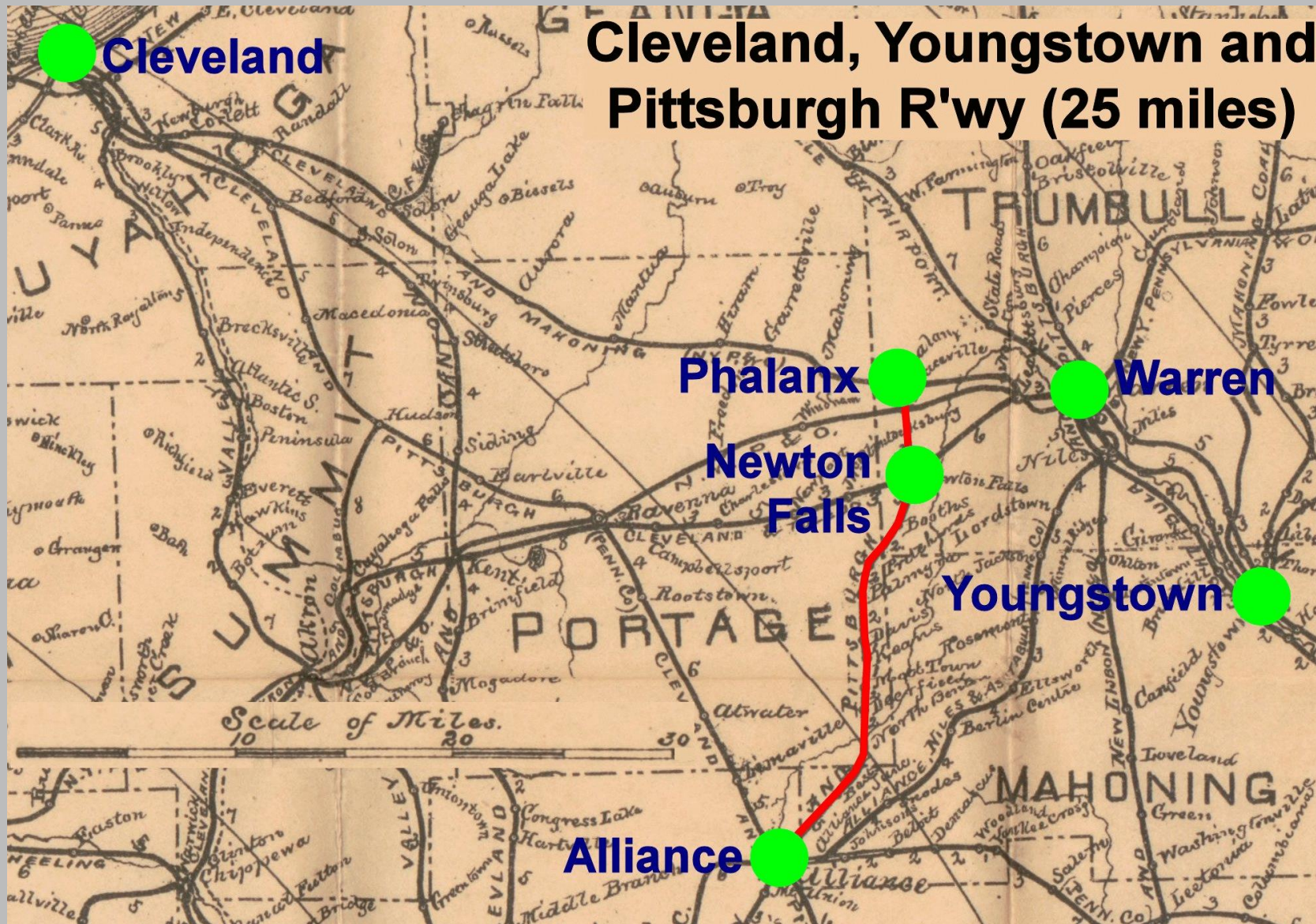
# **Northeast Ohio**

The W&LE started as narrow gauge.



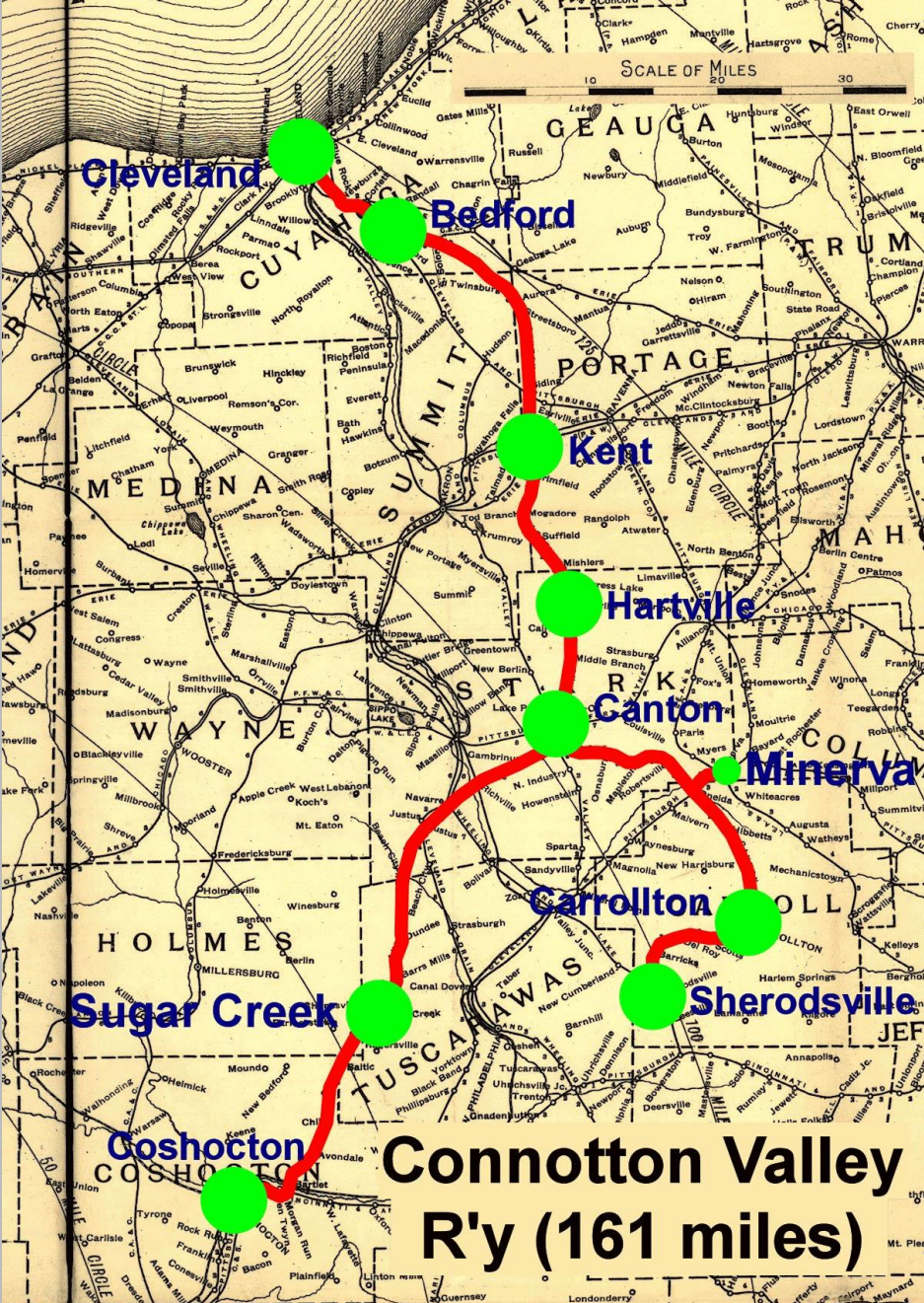


# Road names were often chosen to attract investors.



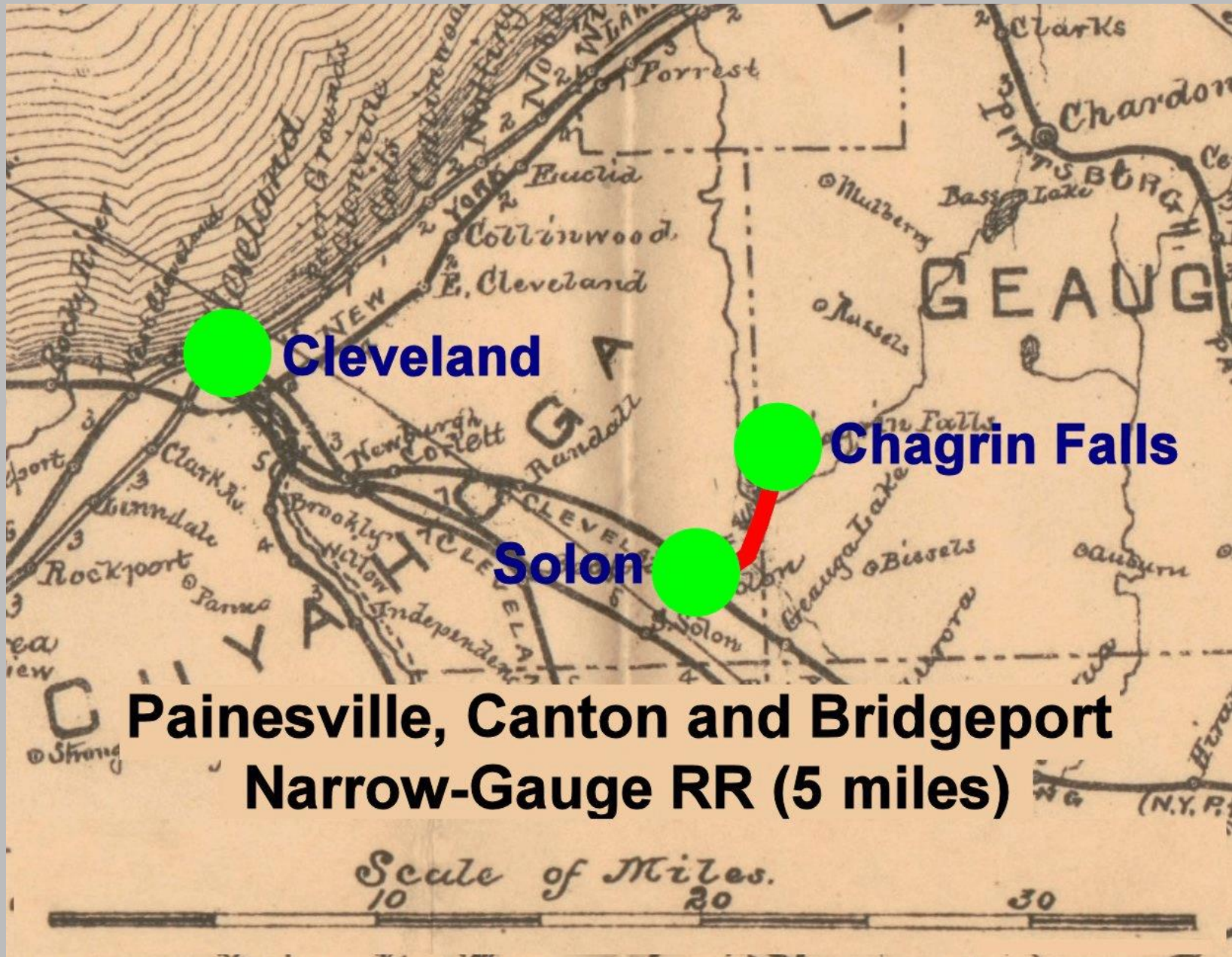


# Northeast Ohio's Giant





# Some railroads were very small.



# Pictures



**Cincinnati Northern**

/

**Toledo Delphos & Burlington**

/

**Toledo Cincinnati & St. Louis**

/

**Cincinnati Lebanon & Northern**

The first three merged, along with others, to make up the mega-road TC&StL. The last listed came out of the break up resulting from the receivership of the TC&StL, and was the only one of the parts to remain narrow gauge for a significant time.

The CN listed here is distinct from the later Cincinnati Northern that became part of the New York Central.

# Wreck on the Cincinnati Northern

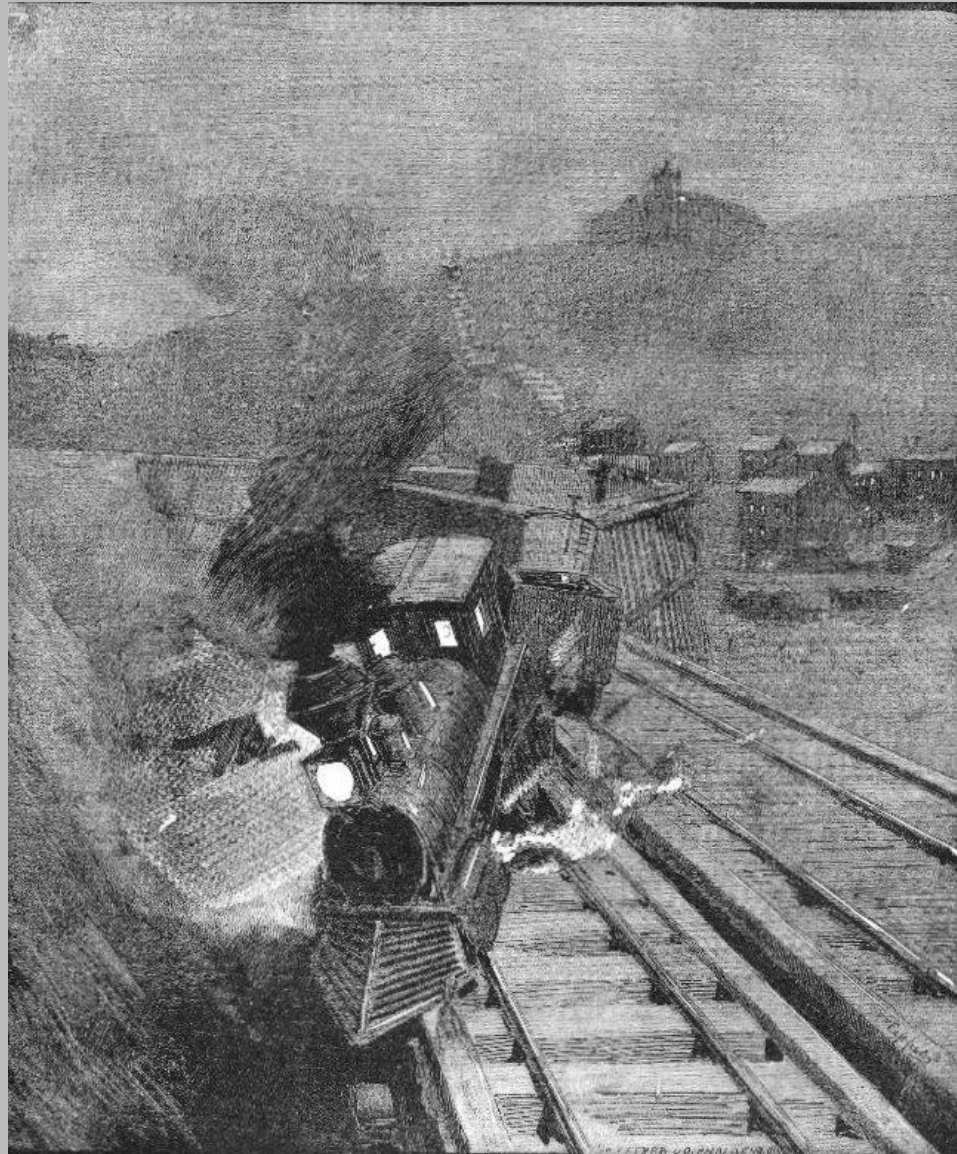
(ex-TC&StL, soon to be named Cincinnati, Lebanon & Northern)

This 1885 wreck killed the fireman. The site is now covered by I-71 just west of the Cincinnati Art Museum.

The wreck was a result of the brakemen keeping warm in the cab instead of manning the brakes on the cars.

That's the museum on top of the hill.

From **The Cincinnati Graphic**, 02/14/1885. Courtesy of the Cincinnati Public Library

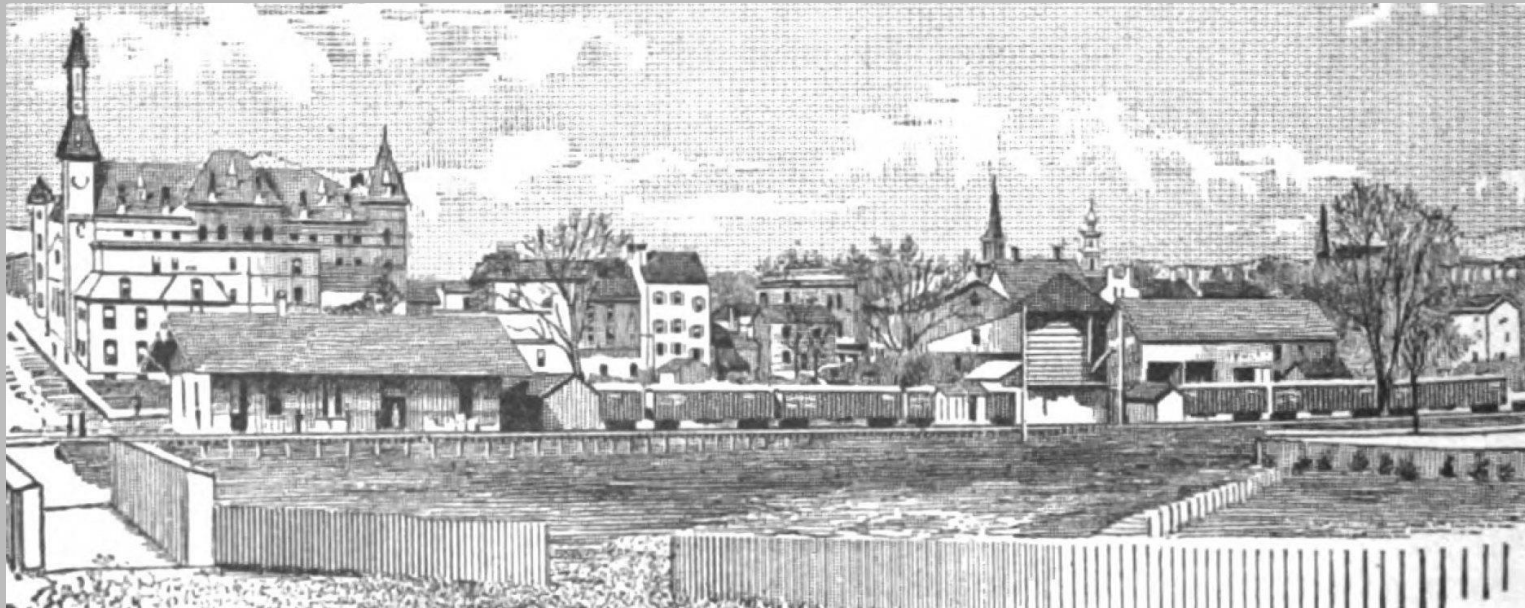




# Cincinnati, Lebanon & Northern Depots



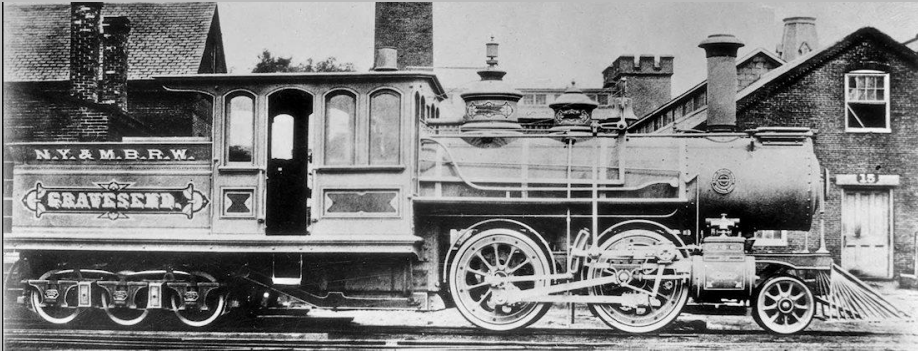
Cincinnati depot. Shared by the Cincinnati & Eastern in its narrow gauge days.  
From Cincinnati Views,  
<http://cincinnativiews.net/>



Lebanon depot

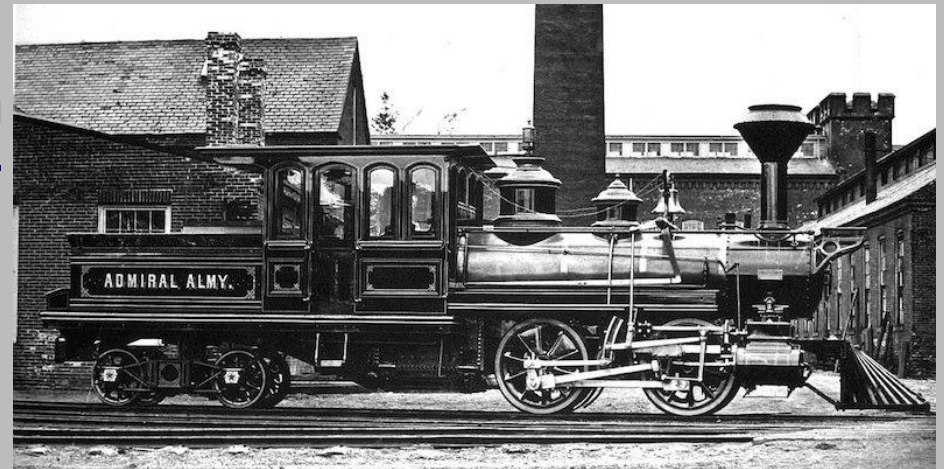
From Historical Collections Of Ohio, Volume II, 1902, by Henry Howe

# The TD&B relied on Mason “Bogies”



New York & Manhattan Beach  
"Gravesend", a Mason bogie+2-4-  
6T, later sold to the TD&B  
from nyhistory.org

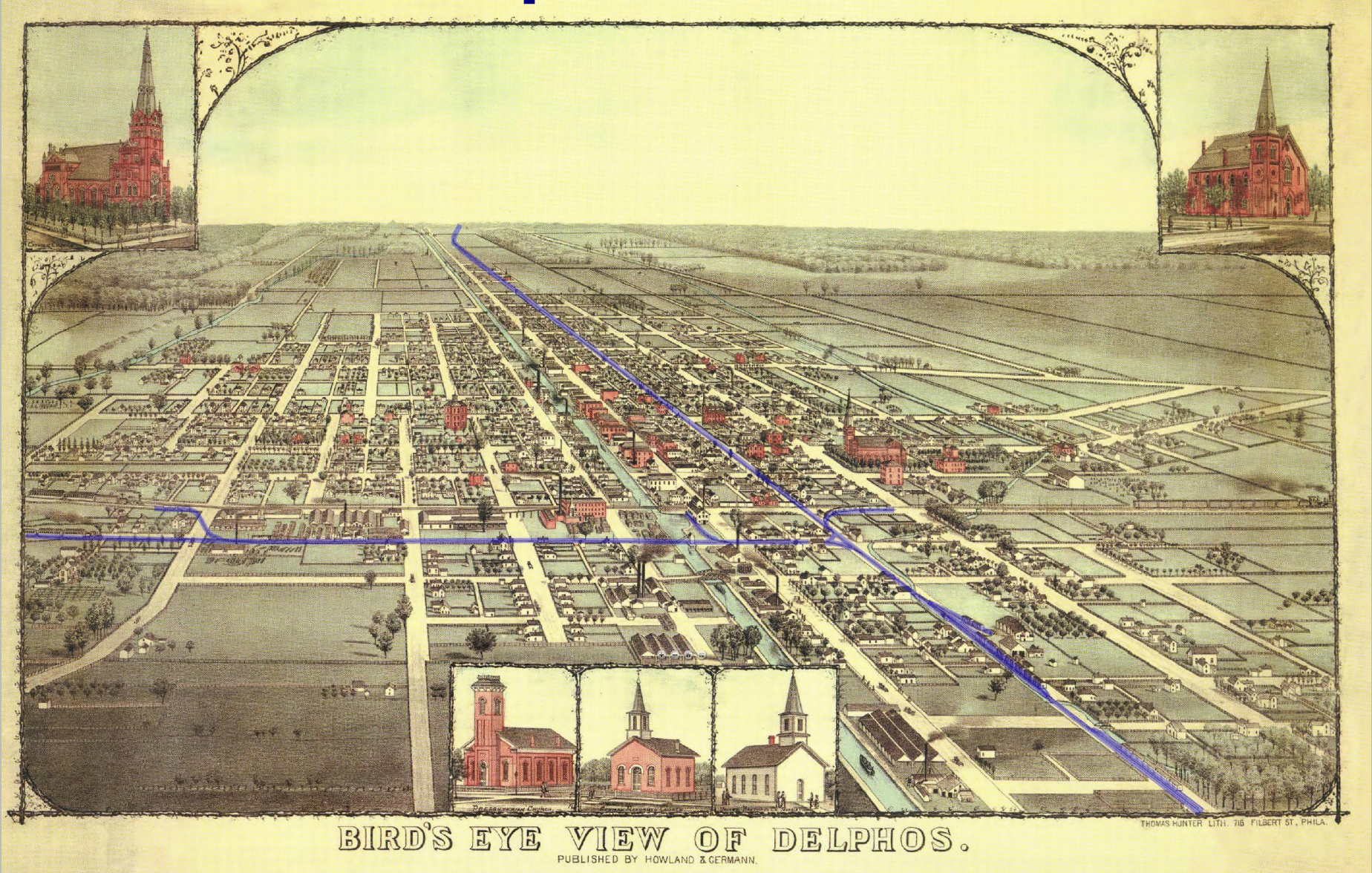
New York & Manhattan Beach  
"Admiral Almy", a Mason bogie+0-  
4-4T, later sold to the CN  
from davidwoodhead.com



Manistee & Luther engine 1, "The  
Monkey", ex TD&B/TC&StL 0-6-4T,  
converted by M&L  
from University of Michigan Library



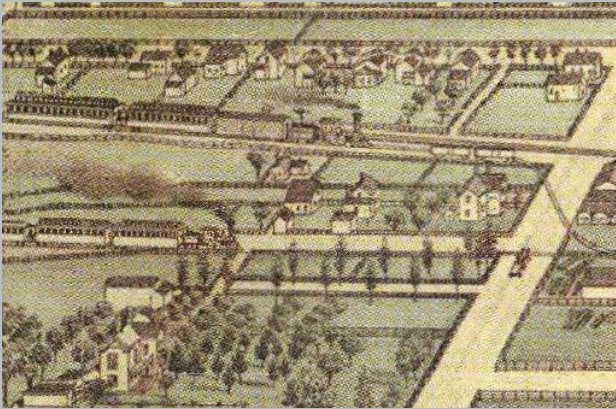
# Delphos in 1881



Blue lines indicate TD&B tracks  
From Ohio Memory, <https://ohiomemory.org/>

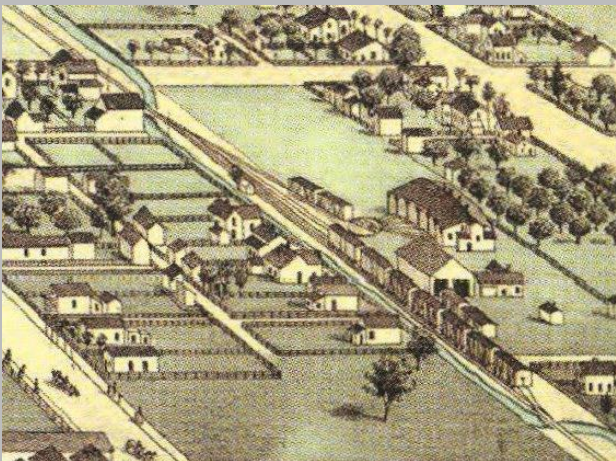
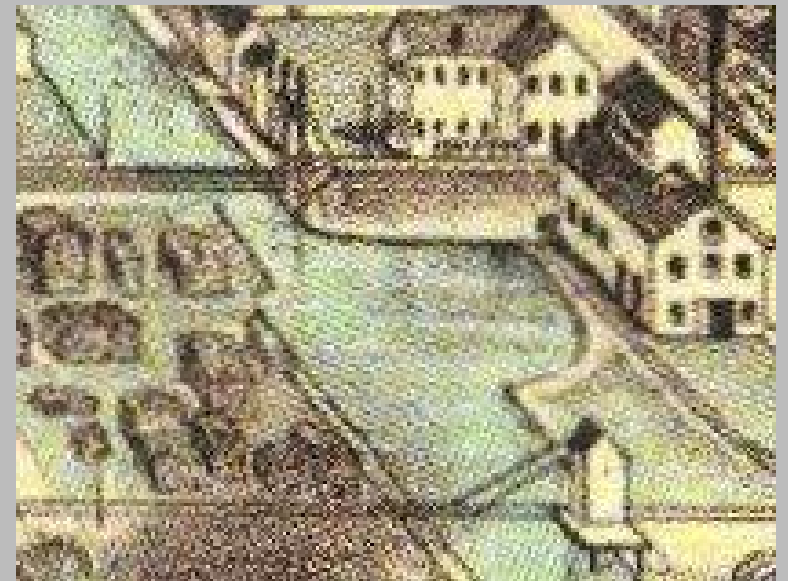


# Details from Delphos Panorama



Here we have the Pittsburgh, Ft. Wayne & Chicago (above) steaming in from Chicago while the Toledo Delphos & Burlington (below) comes in from Kokomo.

Two railroad bascule bridges over the Miami-Erie Canal. The lighter TD&B bridge is in front.



The TD&B roundhouse and shops.



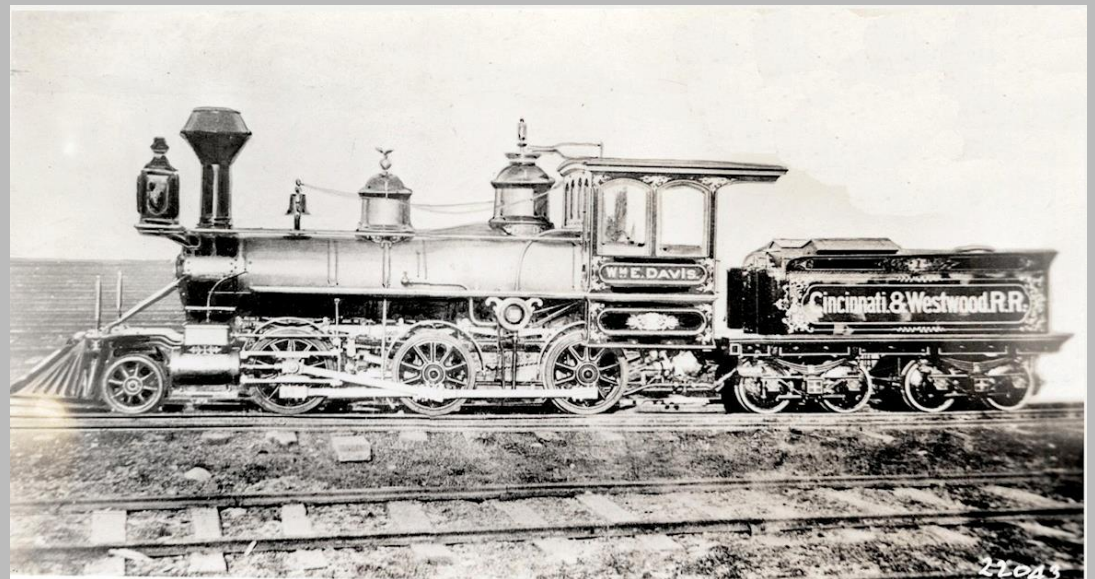
# **Cincinnati & Westwood**

# Cincinnati & Westwood



C&W's Glenmore depot  
From west2k.com

C&W's No. 1, Wm. E. Davis  
An 1876 Brooks Mogul  
From the Smithsonian Institute



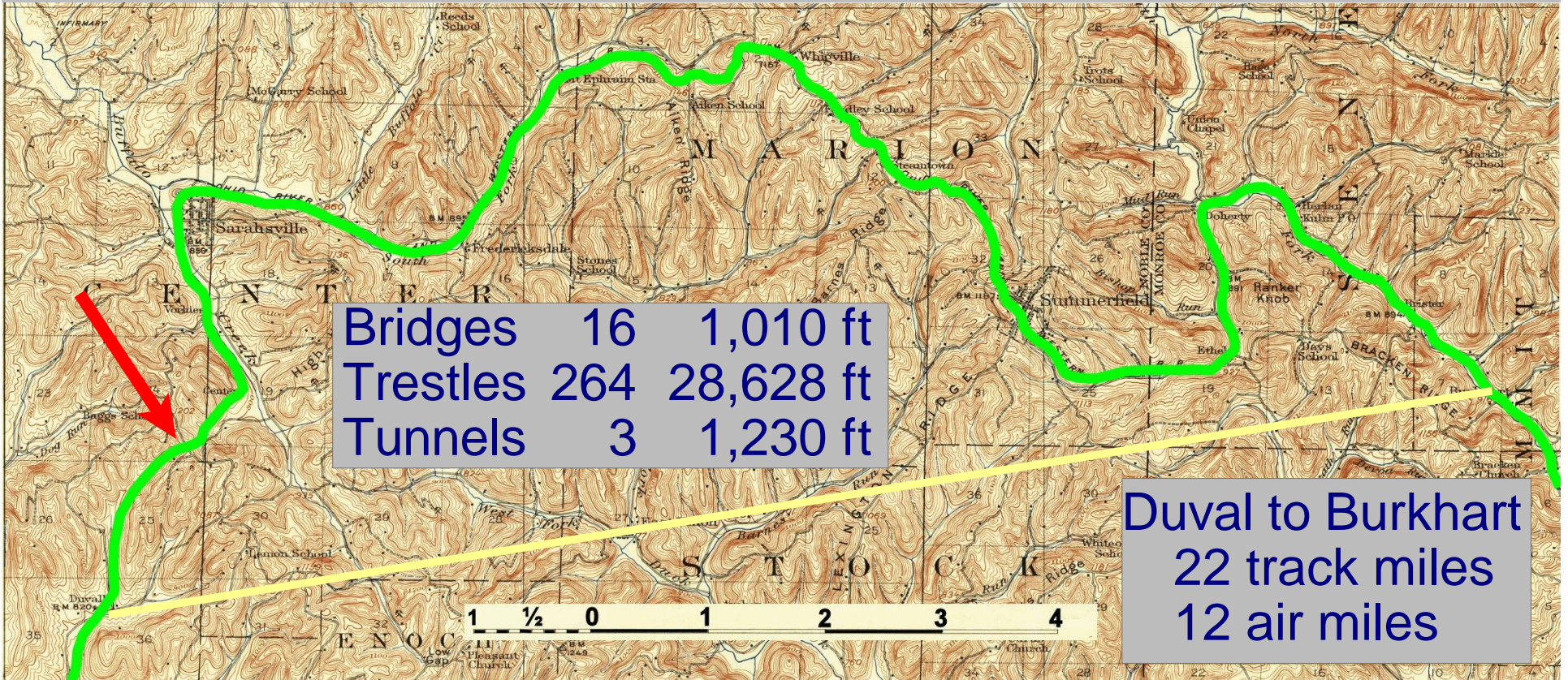


**Bellaire & Southwestern**  
/  
**Bellaire Zanesville & Cincinnati**  
/  
**Ohio River & Western**

This was the last narrow gauge railroad in Ohio and was abandoned in 1931. Therefore, there are more pictures of it than other narrow gauge roads.

As it grew west from Bellaire, it adopted each of the above names in the given order.

# Part of why the OR&W stayed narrow gauge

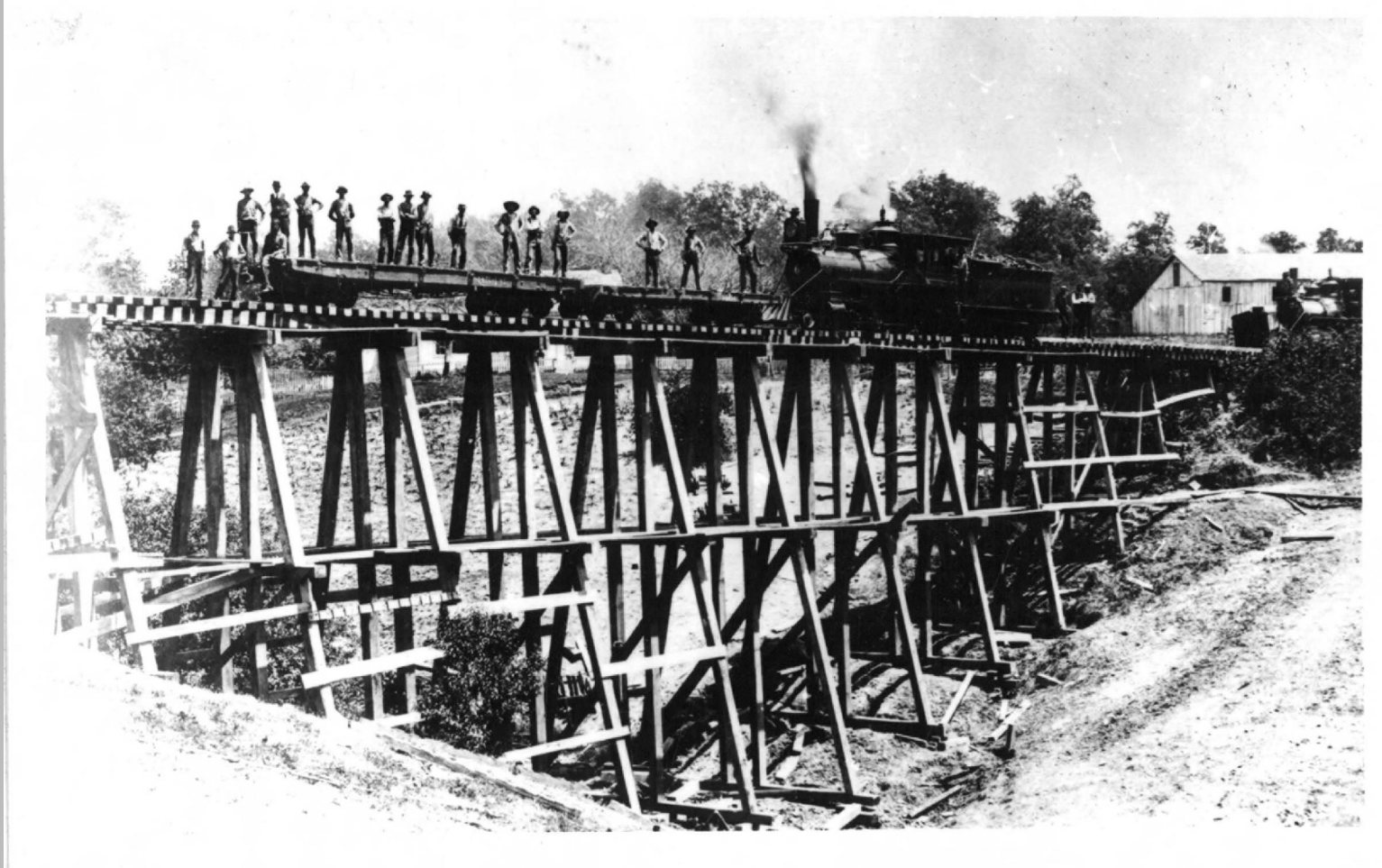


The OR&W ran through some of the toughest terrain in Ohio, so widening the right of way would have been expensive. The arrow marks one of the tunnels.

South quarter of the Summerfield Quadrangle USGS Map  
Edition of 1911, reprinted 1942



# Bellaire, Zanesville and Cincinnati



*A view of the trestle near Caldwell, Ohio*

This trestle was washed out in a flood and this is the replacement structure.

Courtesy Columbus Public Library

# Last Run of the OR&W - May 1931

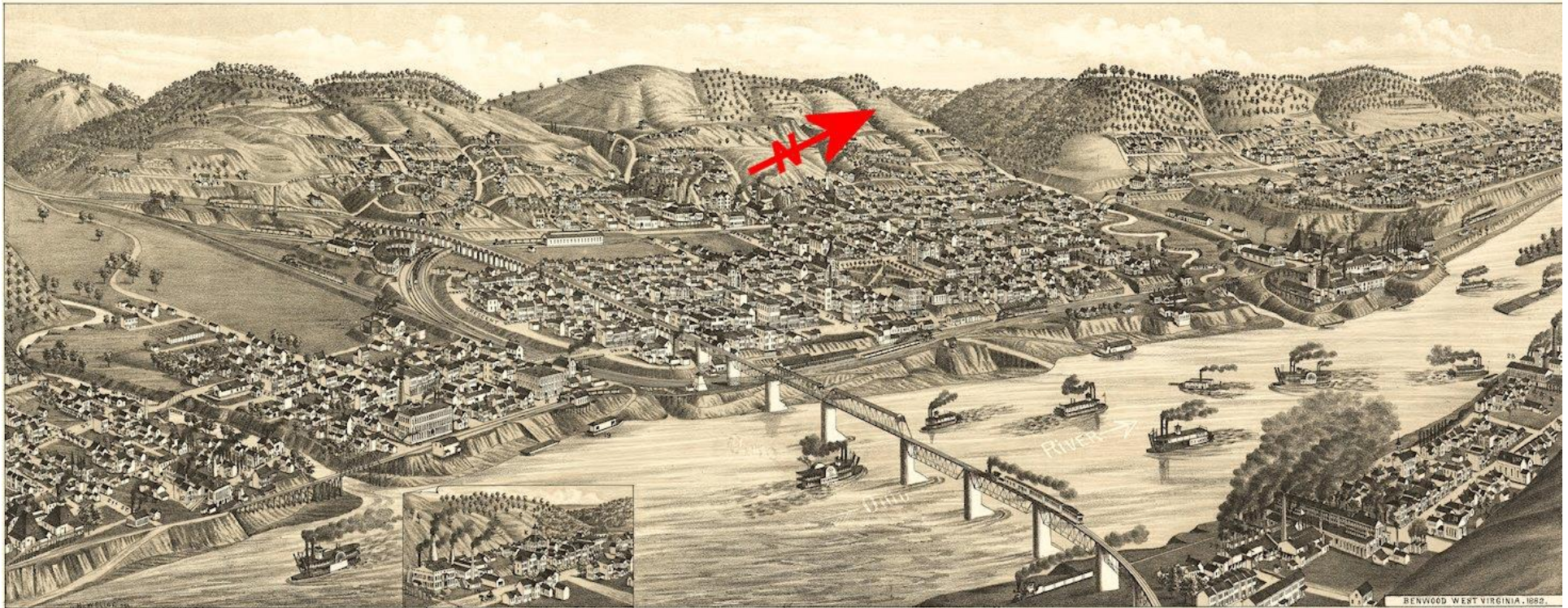


Courtesy K.ITTY, Narrow Gauge Discussion Forum <http://ngdiscussion.net>



# Panorama of Bellaire, Ohio

## Home of the Bellaire, Zanesville and Cincinnati



- 75-644912
- A.—Presbyterian Church.
  - B.—Doyle's "
  - C.—United Presbyterian Church.
  - D.—Methodist "
  - E.—Episcopal "
  - F.—German Evangelical "
  - G.—Catholic "
  - H.—Methodist " South Bellaire.
  - I.—High School.
  - J.—Gravel Hill School.
  - K.—South Bellaire "
  - L.—African "
  - M.—City Hall.
  - N.—Market House.
  - O.—Gas House.
  - P.—B. & O. R. H. Depot.
  - Q.—C. & P. "
  - R.—B. & S. W. "
  - S.—Water Works.
  - T.—Reservoir.
  - U.—B. & O. Round House and Shops.
  - V.—C. & P. "
  - W.—B. & S. W. "
  - X.—Soldiers' Monument.

1. First National Bank.
2. Globe Hotel.
3. Belmont House.
4. Bellaire Nail Works.
5. Union Window Glass Works.
6. Lantern Globe Manufacturing.
7. Bottles Works.
8. Belmont Glass Works.
9. Buckeye Lantern Co's, Pack Room and Store House.
10. Astoria Glass and Mfg Co.
11. National Glass Works, Rodefer Bro's.
12. Window Glass Works.
13. Ohio Glass Works.
14. Bellaire Stamping Co.
15. Planing Mill and Lumber Yard, Dulbeis & McCoy.
16. Bellaire Boiler Works, J. B. Barnhill.
17. Upper Wharf Boat, C. H. Dankworth, Agt.
18. Lower " " Wm. Mashey, Prop.
19. Carriage Factory, A. H. Marsh.
20. Wagon and Machine Shop, Shipman & Nevil.
21. Marble and Granite Works, M. W. Jordan.
22. Brick Yard, David Cressler.
23. Smith & McClain, Contractors and Stone Masons.
24. Cooper Shops, G. W. Goodhau.

- Published by J. J. Storer, Madison, Wis.
- I. L. Fawcett, Groceries and Provisions, 1100 South Belmont St.
  - M. Huffman, Palace Drug House, 1100 " "
  - Glass City Drug Store 1121 " "
  - A. T. Lockwood, Groceries and Prov. 1508 " "
  - John Zwieg, Hardware, Stoves, &c., 324 Union St.
  - Matt. Auftring, Bakery, Belmont, cor. 23rd St.
  - Mrs. H. Miller, Dry Goods, Millinery, Fancy and Goods Furnishing (Goods, 229 Union St.
  - Andrew Turman, Globe House Barber Shop.
  - Schramm Bro's, Groceries and Provisions, 141 Belmont St.
  - D. Kramon, " " 138 Noble St.
  - D. Laab, " " 300 " "
  - Jacob Reitz, " " 401 " "
  - J. G. McCollough, Physician and Surgeon 929 " "
  - " " Drugs and Medicines, 681 " "

- BIRD'S EYE VIEW OF BELLAIRE, OHIO. 1882.
- Back & Paul, Lithographers, Milwaukee, Wis.
- 95. J. Sinsclair, Drugs and Medicines, Benwood.
  - 97. Benwood Nail Works.
  - 98. Riverside Furnace.
  - 99. Benwood School.
  - 99. Catholic Church, Benwood.
  - 99. Methodist " "
  - 99. Lutheran " "
  - 99. John B. Helff, Slaughter House and Residence.
  - 99. Glass City Flouring Mill, Fred. Muhleman.
  - James F. Anderson, 217, Independent, 313 Union St.
  - 30. Hubbard & Inabney, Drugs and Medicines, 314 Union St.
  - C. N. Allen, 257, Democrat, 127 Belmont St.
  - Hubbard & Inabney, Drugs and Medicines, 314 Union St.
  - Mayer & Klotz, Dry Goods, Carpets, &c., 234 " "
  - Fred Hoffman, Furniture and Undertaking, 232 Union St.
  - J. B. Smith, Attorney and Notary, 229 " "
  - D. M. Corlett, Groceries and Provisions, 209 Belmont St.
  - Joseph Burrier M Fr and Dealer in Tobacco & Cigars, 300 Union St.
  - Alexr Mayer, Dry Goods Clothing & Carpets, 222 " "
  - S. Elias, Clothing, Hats, Caps and Gents Furnishings, 226 " "
  - I. N. Grafson, Undertaker and Practical Embalmer, 217 " "
  - John H. Hill, Meat Market, 308 " "

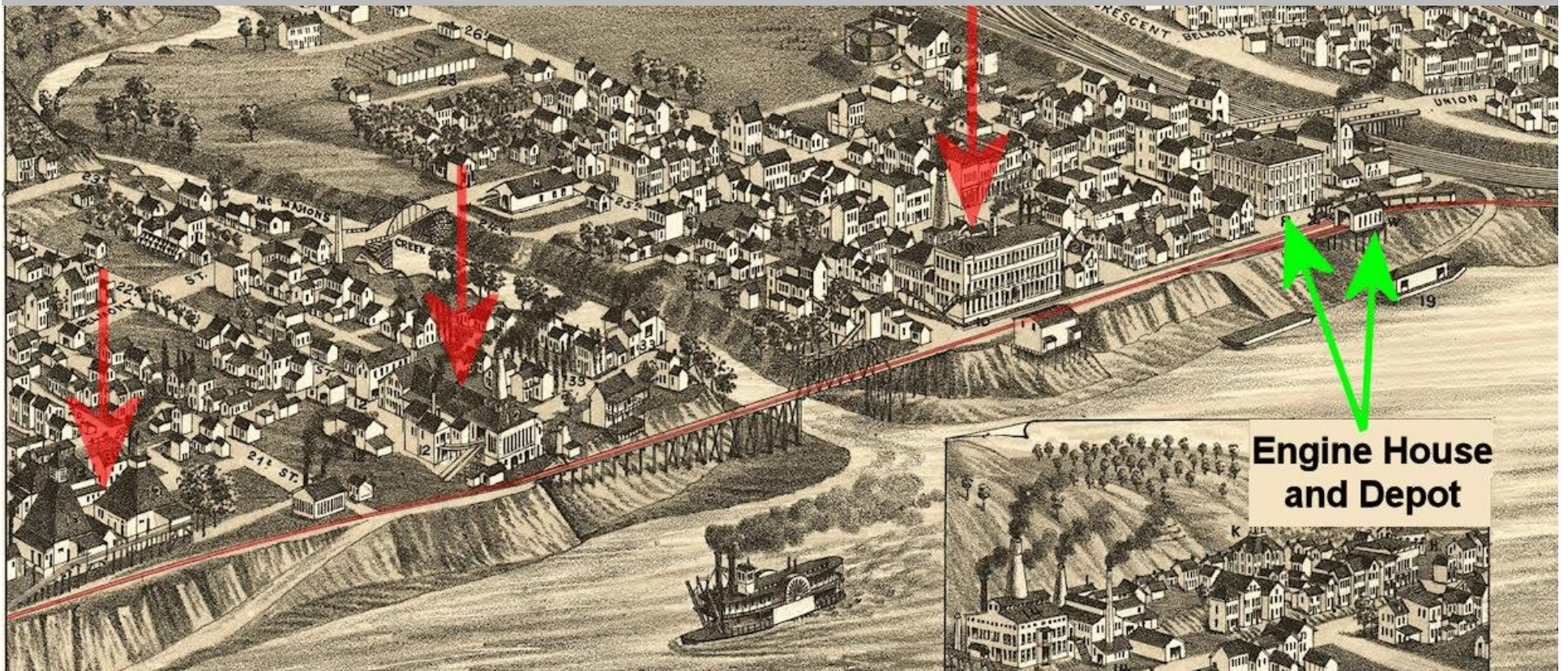
- O. C. Gentry 256, Store, 202 Belmont St.
- Ross & Galsaber, Attorneys at Law, Bank Building.
- Fred Florie, Groceries and Food, 229 Belmont St.
- R. W. Muhleman, Physician and Surgeon, 194 Belmont St.
- Wiley & Wetherall, Dry Goods and Notions, 215 " "
- Geo. H. Math, Boat Store, Groceries and Provisions, 220 Union St.
- Joe. Fulton, Sausm and Gas Fitter, 215, 23rd St.
- W. S. Carroll, Groceries and Provisions, " near Belmont St.
- A. Stahl, Lumber Store, 222 Union St.
- F. J. Smith, Boot and Shoe, 118 Belmont St.
- J. J. McDermott, Saloon and Eating House, 127 Union St.
- Wm. Schneider, " " Restaurant, 124 " "
- Amelia Winkler, Bakery and Ice Cream Saloon, 402 Union St.
- A. V. Hensywill, Groceries and Provisions, 628 Belmont St.
- Mrs. S. J. Keel, " " Pavy, Gourcery St. West End 20 St.
- Wm. H. Bisher, Meat Market, 231 West 20 St.
- Fred Rodewig, Bakery, 230 Belmont St.
- J. A. Pollock, Grocery and Ice Cream Saloon, 401 Belmont St.
- Wm. Mashey, Groceries and Provisions, 214, 3rd, Belmont & Union.
- O. C. Adair, " " 405 Union St.
- Jennie C. Tucker, Confectionery and Cigars, 501 Union St.
- John Steyer, Cigar Manufacturer, " " 508 " "
- Conrad Gasterer, Bakery and Confect, 528 & 535 " "
- Mrs. R. H. Sherry, Saloon and Billiard Parlor, 127 20th St.



G4084  
B2A3  
1882  
614



# Zoom in on Panorama



Red arrows mark glass plants served by the BZ&C  
BZ&C tracks high lighted in red.



# Stations on the OR&W

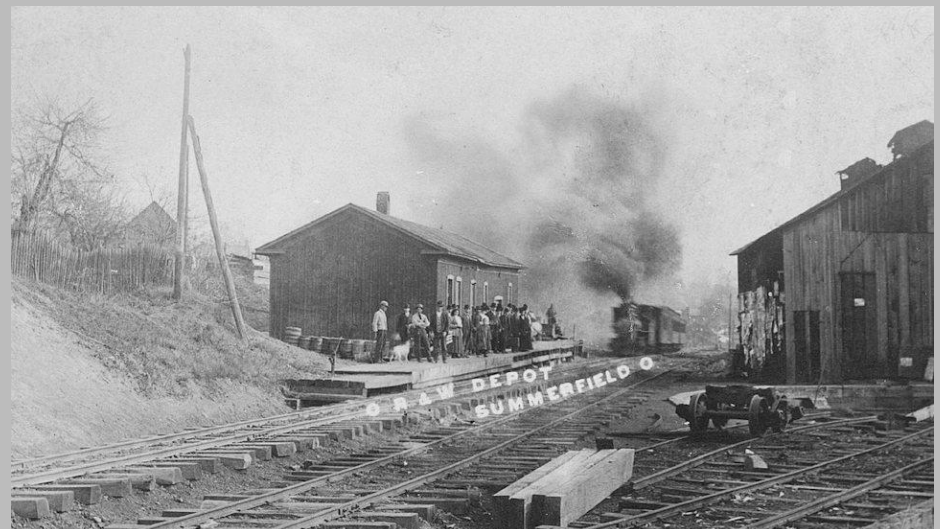
Bellaire enginehouse/depot  
-1913 flood

They were no longer renting  
space in the building across the  
street.



Jerusalem depot

Summerfield depot



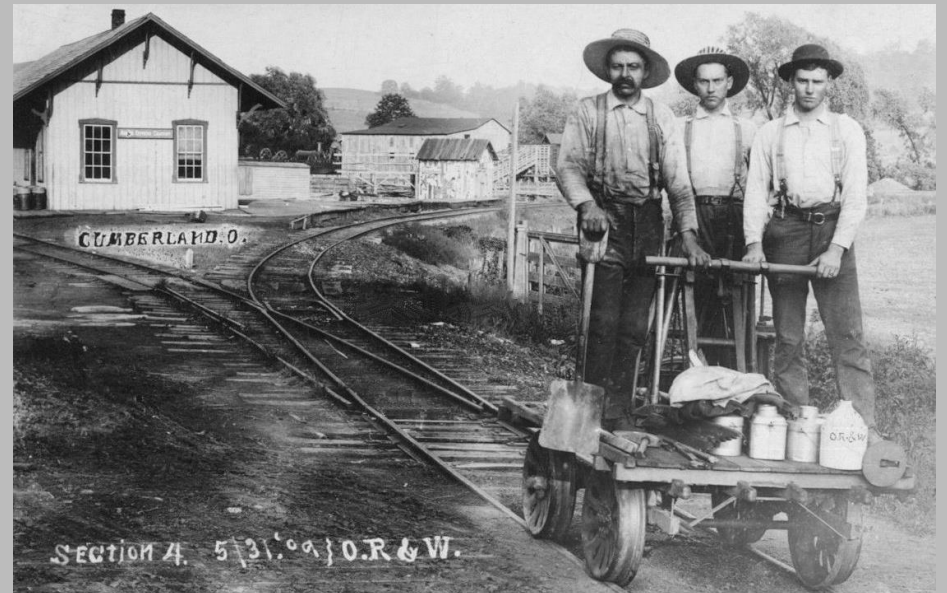
All from west2k.com

# More Stations on the OR&W

Sarahsville depot



Caldwell depot



Cumberland depot

All from west2k.com

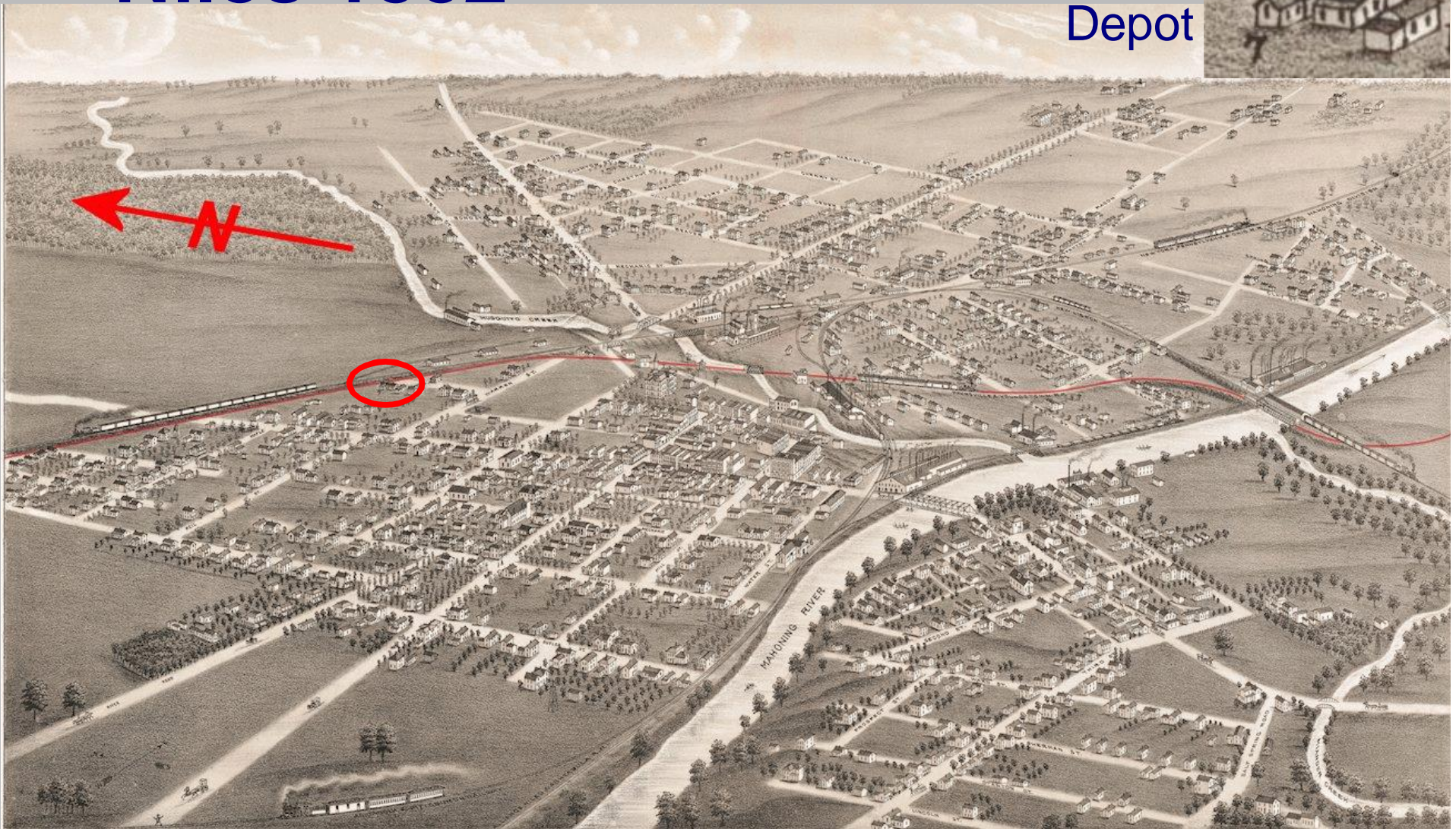


# **Painesville & Youngstown**

The first narrow gauge railroad in Ohio

# Niles 1882

Niles  
Depot



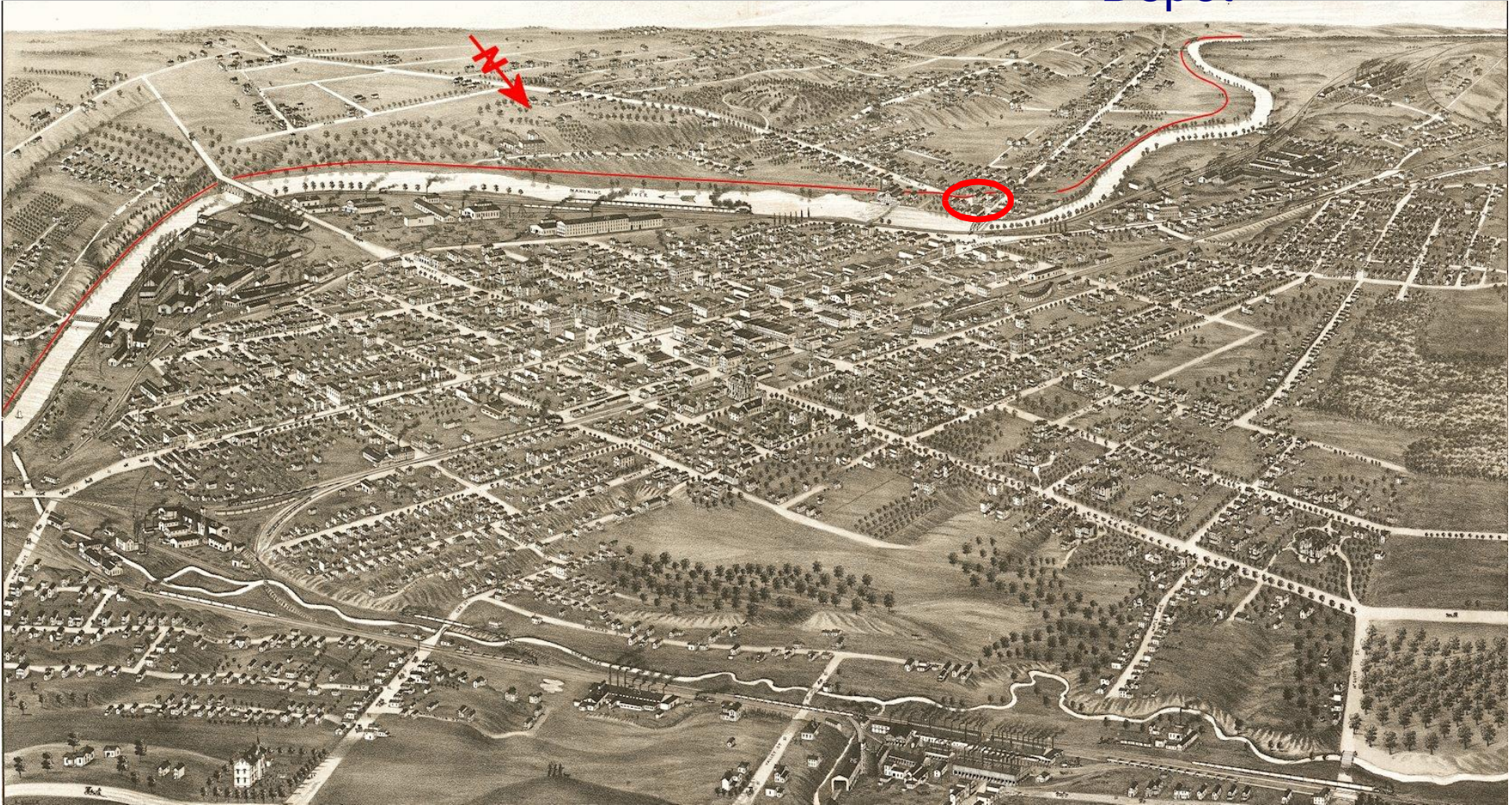
The P&Y is highlighted in red meandering across the center of the picture.  
The location of the station is in the red oval and detailed above.

Courtesy Library of Congress



# Youngstown 1882

Youngstown  
Depot



The P&Y wanders to Youngstown, as shown by the red line.  
The Youngstown station is in the red oval, and detailed above.  
Courtesy Library of Congress



**Connotton Valley**  
/  
**Cleveland & Canton**  
/  
**Wheeling & Lake Erie**



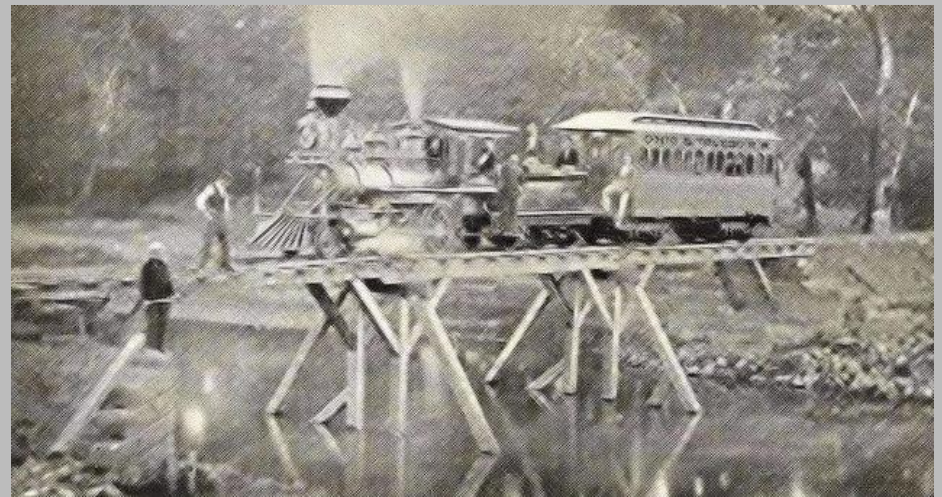
# Locomotives



CV predecessor Ohio & Toledo  
No. 1, a National Locomotive  
Works product in 1875.  
From <http://ngdiscussion.net>

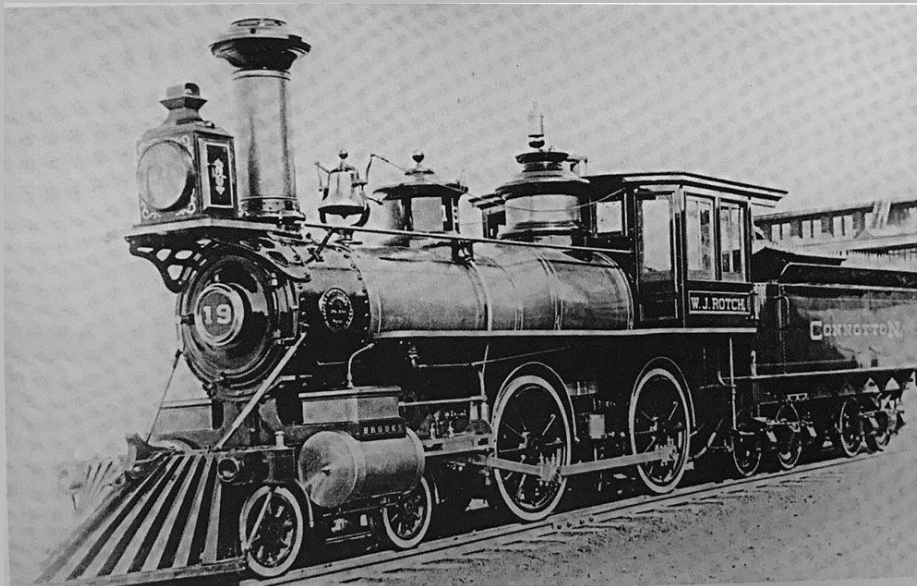
This is a W&LE locomotive, a  
National Locomotive Works  
engine, from their narrow gauge  
days.

From <http://ngdiscussion.net>



Connotton Valley's Number 19,  
from the Brooks Locomotive  
Works

From Cleveland Historical,  
<https://clevelandhistorical.org/>





# Surviving W&LE Depots, Some Are Relics of Narrow Gauge Era

Bedford depot, constructed by  
Conotton Valley Railroad  
Photo courtesy Bedford Historical Society



Kent depot, probably  
constructed by CV

Hartville depot, roof and door  
styles don't match others. I  
believe this came from the  
standard gauge days.



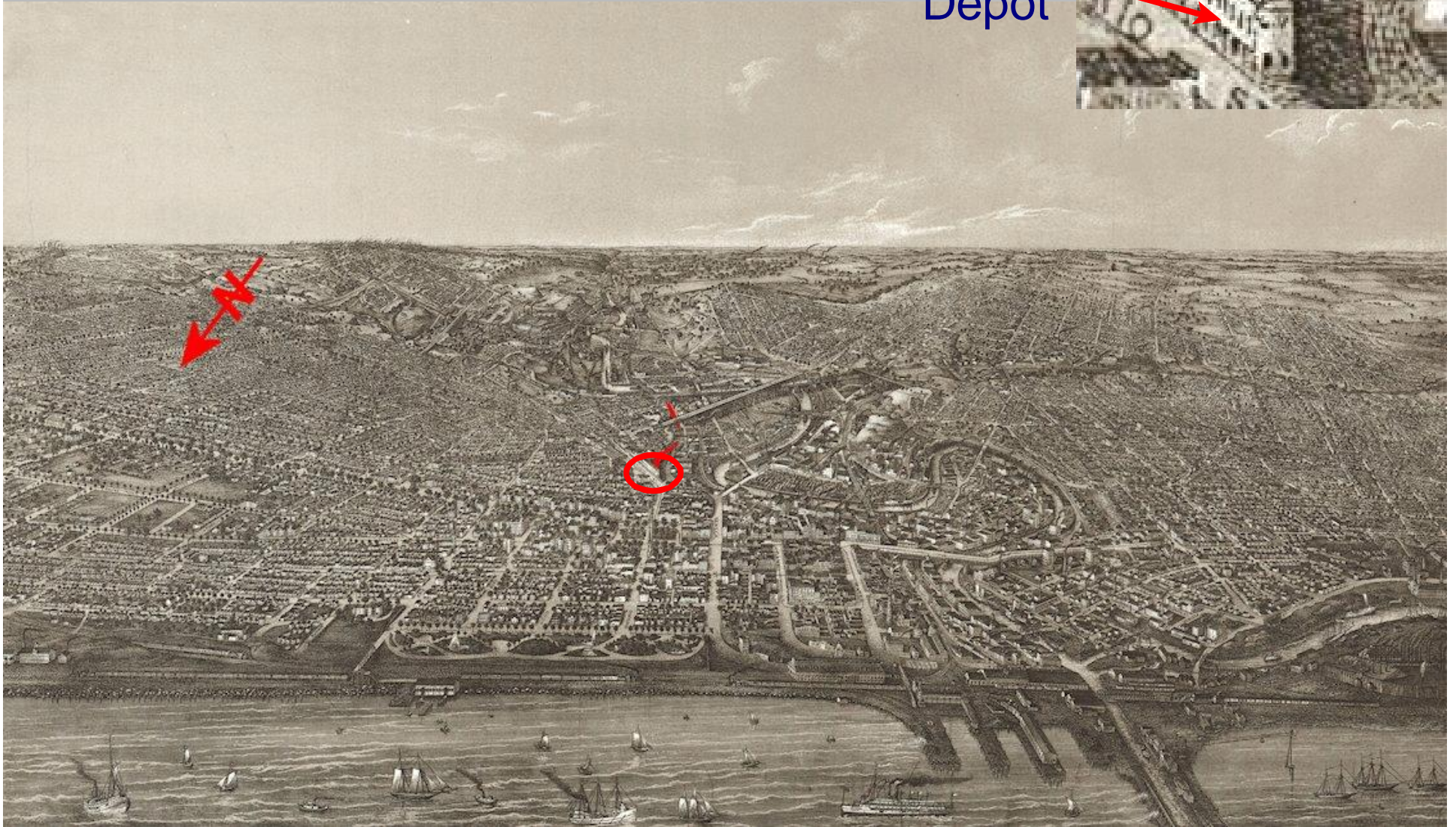
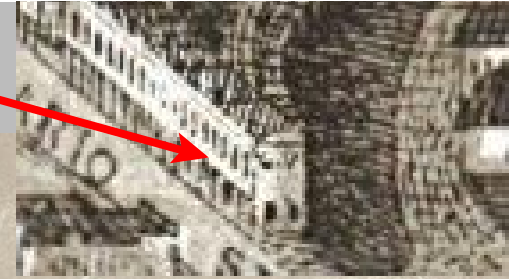






# Cleveland 1887

Cleveland  
Depot



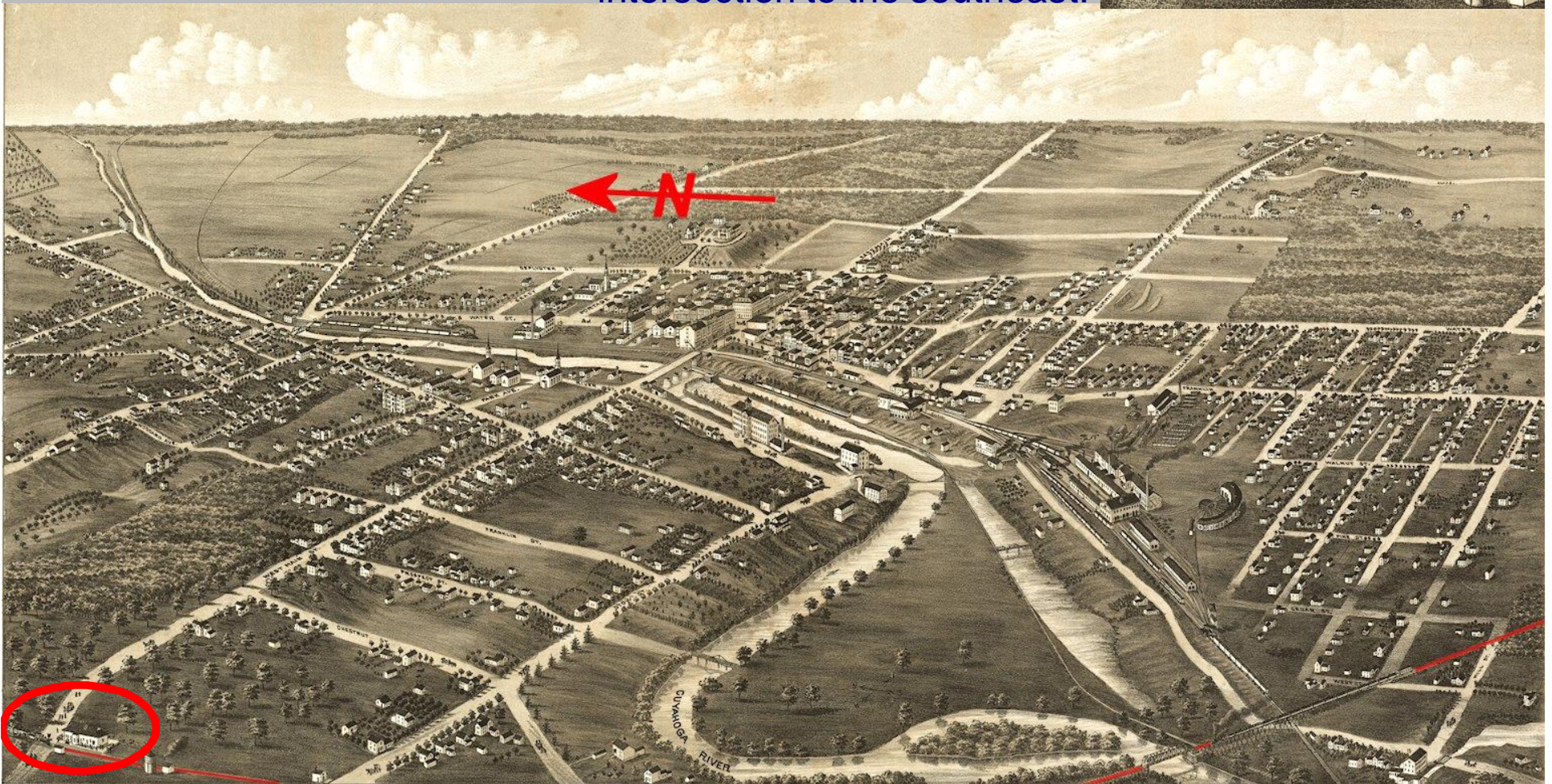
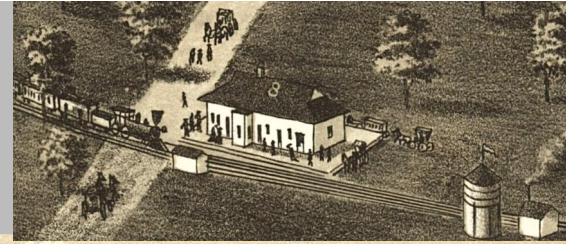
The CV route is marked in red and the Ontario Street depot is circled, and shown above.  
Courtesy Library of Congress



# Kent 1882

## Kent Depot

The artist has moved it from the northwest corner of the intersection to the southeast.



The Connotton Valley is highlighted across the bottom of the picture. The depot is circled and shown in detail above.

Courtesy Library of Congress



# Source Notes

## Primary Sources

**Annual Report of the Commissioner of Railroads and Telegraphs** - Lists all Ohio roads with line, economic and usage data. Published annually from 1867

**Sanborn Maps** - Fragmented but detailed city maps from late 1860s to 1950s depending on city

**Travelers Official Guide** - Includes passenger schedules for almost all roads; first published in 1868.

## Maps Used

Maps from the Commissioner of Railroads & Telegraphs Report - Courtesy of Library of Congress

Map of Hamilton County, Ohio, March 1884 - Courtesy of Cincinnati Public Library

## Secondary Sources

**The Nickel Plate Story** by John A. Rehor

**Railroad with 3 Gauges (The Cincinnati, Georgetown and Portsmouth RR and Felicity & Bethel RR)** by David McNeil

**Narrow Gauge in Ohio (The Cincinnati, Lebanon & Northern Railway)** by John W Hauck



# Internet Resources

- **Hathi Trust Digital Library** -<https://babel.hathitrust.org/>
  - ▶ Great source for historic documents
  - ▶ Challenge to navigate
  - ▶ Many Ohio Commissioner reports available here
- **Library of Congress Maps** -<https://www.loc.gov/maps/collections/>
  - ▶ Great source for maps
  - ▶ Fair coverage of Ohio Sanborn Insurance maps
  - ▶ Good indexing and searching
- **Ohio Web Library - Sanborn Maps** -<http://oh0051.oplin.org:2065/>
  - ▶ Requires Ohio library card
  - ▶ Astounding array of Ohio communities covered
  - ▶ Good indexing and searching
  - ▶ Unfortunately, maps are black and white
- **University of North Texas Libraries** - <https://texashistory.unt.edu/>
  - ▶ Lots of great maps
  - ▶ High resolution views on-line, limited download resolution
  - ▶ Not bad searching capability
- **Public Library of Cincinnati and Hamilton County** -<https://digital.cincinnati.library.org/digital/>
  - ▶ Good maps
  - ▶ Good download capability in PDF format
  - ▶ Navigation isn't bad
- **Google Books** - <https://books.google.com/>
  - ▶ Great source for historic documents
  - ▶ Challenge to navigate
- **Facebook** - I ran into this after the project was complete. Valuable resource for the Ohio River & Western
  - ▶ <https://www.facebook.com/groups/ORandWRailroad>